**DESCRIPTION:****BITUMEN GEOTEXTILE ROADSEAL TAPE**

ROADANCHOR® is a self-adhesive rubberized bitumen tape, backed with non-woven stress absorbing geotextile fabric. Provides high strength, high elongation, crack inhibition and high-performance waterproof block-out to damaged asphalt or concrete surfaces. Used extensively for remedial road resurfacing and overlaying repair operations. Also used in pipe/culvert bandage operations to seal joints and bridge expansion joints. This stress absorbing bitumen layered geotextile provides a composite membrane bonding tenaciously to clean dry asphalt and concrete surfaces. Applied with or without primer. We would recommend however to enable superior substrate & inter-coat adhesion to utilize Primer B4 - Bituminous Black (Fast Dry) Highly Penetrative Primer.

APPLICATIONS:

- Road surface sealing prior to final topping of bitumen & aggregate surface
- Bridge, roof deck construction joints
- Culvert joint sealing
- Paved runways, footpaths and carparks
- Lane widening joints
- Pre-sealer for basements & foundations
- High trafficable areas for high shear resistivity
- Crack sealing prior to surface overlaying or backfilling

FEATURES:

- Rapid bond
- Simple and fast application (remove interleave & simply apply)
- Low water vapour transmission
- High puncture resistance (tree roots)
- High water pressure resistance
- Flexible, highly UV resistant, good sealing properties to substrate imperfections
- Seals out moisture
- Conforms to Vic Roads Spec 626.09 "Covering of external surfaces of joints between adjacent units with fabric cover - non woven synthetic fabric impregnated with a rubberized bitumen"

- Stands up to high temp final hot asphalt pours/ aggregate topping on roadways & carparks
- Highly resistant to mineral acids, alkalis, soils and salts (will never rot)
- Withstands vibration and movement of substrate.
- Available in 300mm x 20m Rolls as standard, with other sizes available.

INSTALLATION STEPS:

1. Remove dirt, grease, water and loose materials from surface
2. Cracks larger than 10mm wide to be cleaned and filled with ASHCON LW®- Elastomeric Liquid Components.
3. Larger cracks and holes should be patched with ASHCON LW® – Elastomeric Liquid plus aggregate components.
4. Apply primer coat with short-nap roller using Primer B4 (fast dry) Bituminous Black highly penetrative primer.
5. ROADANCHOR® is ready to be applied after 30min curing of Primer B4.
6. Remove the release paper liner at start of Roll placing tape in position.
7. Unroll by removing the release paper as you apply.
8. Flatten or compress the applied tape using roller or cloth to remove any air bubbles forming the shape of the surface profile.
9. Roll all strips firmly in place ensuring a tight bond.

NOTE: The surface now coated with ROADANCHOR® is ready for final hot pour layer of asphalt and aggregate broadcast.

PROPERTIES:

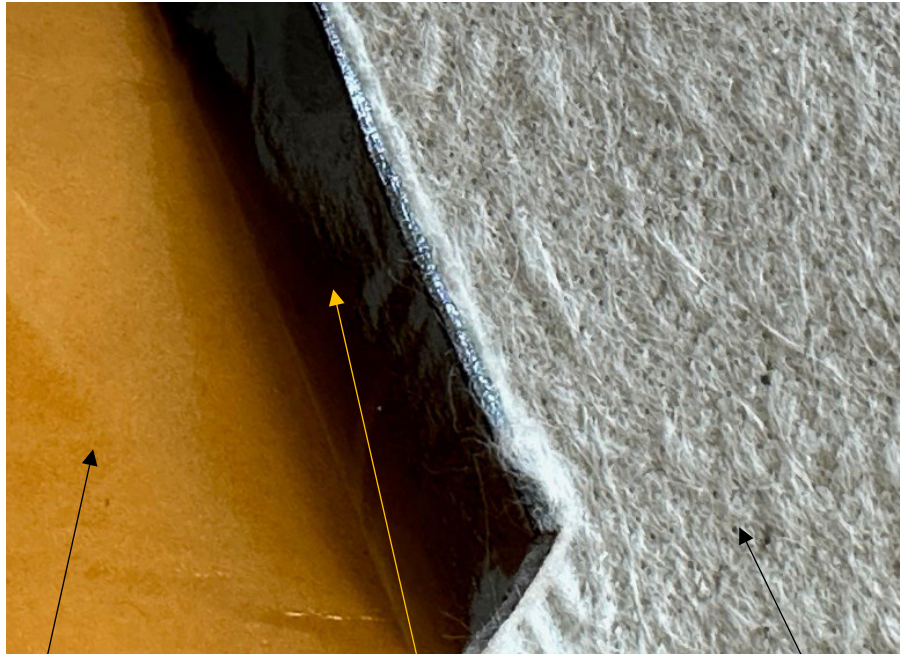
THICKNESS	AS3706.1	2.00mm
WIDTH		100mm, 200mm, 300mm (std) – 900mm (customized)
LENGTH		20m & 30m (customized)
MASS Per Unit Area	AS3706.1	2.2 kg/m ²
Recommended Primer		CREST - B4 Bituminous Solvent Borne 1k Fast Dry Primer
Adhesion Strength	ASTM D 1000 (on steel, 180° peel)	≥50 N/25mm
Elongation	ASTM D 1000	50%
Tensile Strength	ASTM D 1000	≥372 N/50mm or 186 N/25mm
Service Temperature		-20°C to 95°C
Application Temperature		+5°C to +45°C
Hydrostatic Pressure Resistivity	ASTM D5385	≥680 kpa.h*
High Temp Intermittent Exposure of Geotextile Backing	Polyester Backing	190°C
UV Stability		Excellent
Degradability		Will Never Rot

STORAGE:

Keep stored away from direct sunlight in cool dry place.

The perfect choice in the paving /roadway construction and repair, bridge construction and concrete drainage industries. Available readily through approved specialist national distributor.

ROADANCHOR® Polymer Bitumen Geotextile Road Tape



**Removable interleaf for ease
of application**

**Bitumen Rubber
Adhesive Layer**

**POLYESTER Needle Punched Non-
Woven Geotextile Fabric
impregnated with rubberized
bitumen adhesive layer**

CREST CORMIX PTY LTD

Factory/ Head Office

**13-15 APOLLO DRIVE,
HALLAM, VICTORIA, AUSTRALIA 3803
Ph: +61 3 9887 0422**

**www.crestcormix.com.au
sales@crestcormix.com.au**



Important Notice

CREST CORMIX products should be used in accordance with the information contained here. Each user should read and consider this information carefully in the context of how the products will be handled and used in the workplace including in conjunction with other products. While the information contained here is CREST CORMIX's best knowledge at the date of publication, CREST CORMIX PTY LTD makes no representation about the accuracy of the information and information provided is not intended as recommendations which infringe on other patents. If you need clarification or more information, you should contact CREST CORMIX PTY LTD directly. CREST CORMIX products are sold without express or implied warranties, other than as provided by statute, and subject to our standard terms and conditions (provided to customers and available on request). Subject to our standard terms and conditions, and any statutory provisions, CREST

CORMIX PTY LTD accepts no responsibility (including in negligence) for loss or damage of any nature resulting from the use of CREST CORMIX products or reliance upon the information contained here. These products are designed solely for use by fully qualified contractors utilizing specialized equipment and industry expertise.