**DESCRIPTION:****BITUMEN GEOTEXTILE ROADSEAL TAPE**

ROADANCHOR® is a self-adhesive rubberized bitumen tape, backed with non-woven stress absorbing geotextile fabric. Provides high strength, high elongation, crack inhibition and high-performance waterproof block-out to damaged asphalt or concrete surfaces. Used extensively for remedial road resurfacing and overlaying repair operations. Also used in pipe/culvert bandage operations to seal joints and bridge expansion joints. This stress absorbing bitumen layered geotextile provides a composite membrane bonding tenaciously to clean dry asphalt and concrete surfaces. (Applied with or without primer). If asphalt or concrete surface has heavy aggregate surface texture we recommend the use of PRIMER B4 - Bitumen Primer Black as a prime coat direct to substrate to fill surface irregularities providing strong intimate contact with bitumen tape compound.

**APPLICATIONS:**

- Road surface sealing prior to final topping of bitumen & aggregate surface
- Bridge, roof deck construction joints
- Culvert joint sealing
- Paved runways, footpaths and carparks
- Lane widening joints
- Pre-sealer for basements & foundations
- High trafficable areas for high shear resistivity
- Crack sealing prior to surface overlaying or backfilling

**FEATURES:**

- Rapid bond
- Simple and fast application (remove interleaves & simply apply)
- Low water vapour transmission
- High puncture resistance (tree roots)
- High water pressure resistance
- Flexible, highly UV resistant, good sealing properties to substrate imperfections
- Seals out moisture

- Stands up to high temp final hot asphalt pours/ aggregate topping on roadways & carparks
- Highly resistant to mineral acids, alkalis, soils and salts (will never rot)
- Withstands vibration and movement of substrate.
- Available in 300mm x 30m Rolls as standard, with other sizes available.

### **INSTALLATION STEPS:**

1. Remove dirt, grease, water and loose materials from surface
2. If asphalt or concrete surface requires priming with PRIME B4 - Bitumen Primer, the ROADANCHOR® Tape system can be applied directly within 30 minutes.
3. Remove the release paper liner at start of Roll placing tape in position.
4. Unroll by removing the release paper as you apply.
5. Flatten or compress the applied tape using roller or cloth to remove any air bubbles forming the shape of the surface profile.
6. Roll all strips firmly in place ensuring a tight bond.

**NOTE:** The surface now coated with ROADANCHOR® is ready for final hot pour layer of asphalt and aggregate broadcast roadway finish.

### **PROPERTIES:**

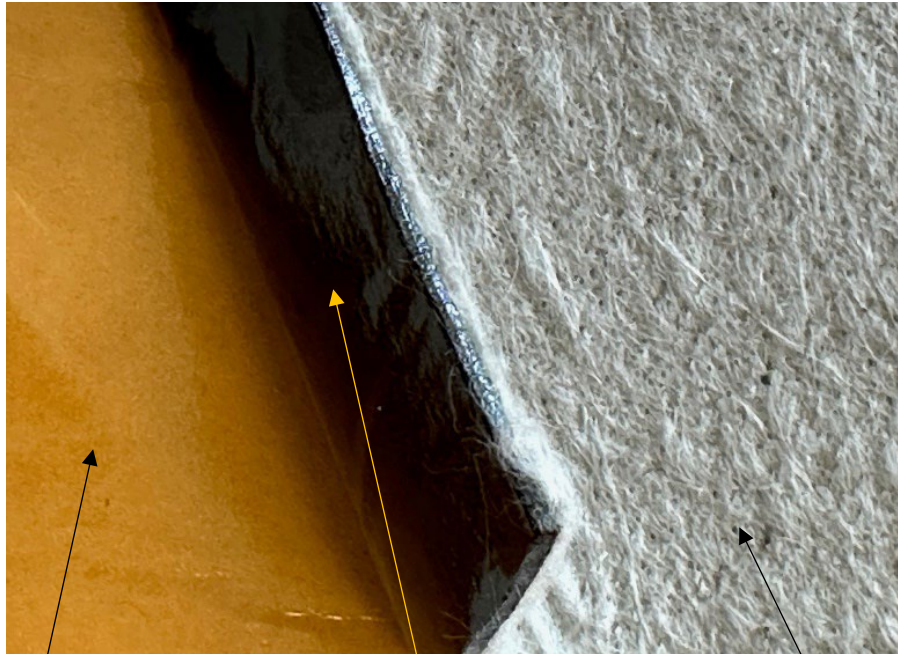
THICKNESS	AS3706.1	2.00mm
WIDTH		100mm, 200mm, <b>300mm (std)</b> – 900mm (customized)
LENGTH		20m & 30m (customized)
MASS Per Unit Area	AS3706.1	2.2 kg/m <sup>2</sup>
Recommended Primer (For when substrate damp)		CREST - SURFACER 1000 Moisture curing 1k MDI
Adhesion Strength	ASTM D 1000 (on steel, 180° peel)	≥50 N/25mm
Elongation	ASTM D 1000	30%
Tensile Strength	ASTM D 1000	≥30 N/cm
Service Temperature		-20°C to 95°C
Application Temperature		+5°C to +45°C
Hydrostatic Pressure Resistivity	ASTM D5385	≥680 kpa.h*
High Temp Intermittent Exposure of Geotextile Backing	Polyester Backing	190°C
UV Stability		Excellent
Degradability		Will Never Rot

### **STORAGE:**

Keep stored away from direct sunlight in cool dry place.

The perfect choice in the paving /roadway construction and repair, bridge construction and concrete drainage industries.

### **ROADANCHOR® Polymer Bitumen Geotextile Road Tape**



**Removable interleaf for ease of application**

**Bitumen Adhesive Layer**

**POLYESTER Needle Punched Non- Woven Geotextile Fabric embossed to Bitumen adhesive layer.**

### **CREST CORMIX PTY LTD**

13-15 Apollo Drive, Hallam, Melbourne VIC 3803

Ph: +61 3 9887 0422 A/H: +61 406 434610

Email: [enquiries@crestcormix.com.au](mailto:enquiries@crestcormix.com.au)

[www.crestcormix.com.au](http://www.crestcormix.com.au)



#### Important Notice

CREST CORMIX products should be used in accordance with the information contained here. Each user should read and consider this information carefully in the context of how the products will be handled and used in the workplace including in conjunction with other products. While the information contained here is CREST CORMIX's best knowledge at the date of publication, CREST CORMIX PTY LTD makes no representation about the accuracy of the information and information provided is not intended as recommendations which infringe on other patents. If you need clarification or more information, you should contact CREST CORMIX PTY LTD directly. CREST CORMIX products are sold without express or implied warranties, other than as provided by statute, and subject to our standard terms and conditions (provided to customers and available on request). Subject to our standard terms and conditions, and any statutory provisions, CREST CORMIX PTY LTD accepts no responsibility (including in negligence) for loss or damage of any nature resulting from the use of CREST CORMIX products or reliance upon the information contained here. These products are designed solely for use by fully qualified contractors utilizing specialized equipment and industry expertise.