

Typical Liquid Properties at 25°C

Viscosity (Brookfield @ 25°C)
 Part A Polyol 4,300 cPs
 Part B MDI ISO – 200 cPs
 Specific Gravity @ 25°C:
 Part A Polyol – 1.06
 Part B MDI – 1.23

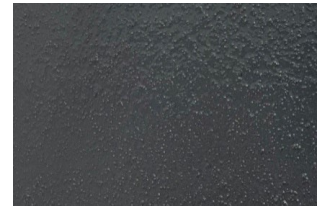
COLOUR / TEXTURE

Grey Texture



Grinded Flat Finish

Black Texture



CONSUMPTION

Approximately 80 complete 19.15 kg kits of ASHCON LW will yield 1 x metre of elastomeric concrete.

SUBSTRATE PREPARATION & MIXING

Important: ASHCON LW is **moisture sensitive**. Do not install product unless cure can achieve at least 2 hours before rainfall. Do not install below 10°C or in a **wet environment & damp substrate**. Ensure any moisture present in substrate is less than 4%. If moisture content is above 4% then hot air blasting needs to be carried out to remove excess moisture from the substrate. Cut out all damaged spalled concrete/ or asphalt to leave a clean dust free dry exposed aggregate surface, ensuring there is no contamination. The edges of repair must be cut at right angles and full depth of the repair. New concrete should be at least 14 days old. Sandblasting is the preferred method of surface preparation, failing this you will need to use correct cut off & grinding discs (designed for concrete). No primer is required, when the concrete or asphalt surface is prepared clean and roughened and of course dry (less than 4% moisture). Utilising moisture probe meters should be used to ensure below 4% moisture content. In the case where additional bonding/ or sealing against moisture in the substrate necessary use our Rapid Dry 1K SURFACER 1000 as an initial prime/ sealer 1st coat to substrate. The use of 1k SURFACER 1000 (moisture cure 1k pre-polymer) is a primer/sealer and bonding agent preventing any inherent moisture in the substrate (concrete or asphalt) interfacing with ASHCON LW. If ASHCON LW is exposed to UV Light, we would recommend a broadcasting of sand over the joint /or repair (within 20min) to provide a non-skid surface and long term "concrete lool-alike" finish. ASHCON LW is an Aromatic Polyurethane and like similar epoxy type fillers will dis-colour on UV exposure. Consult CREST CORMIX for options where grinding is undertaken.



MIXING Product needs to be mixed with a sturdy drill and sturdy mixer head (see example Pic). Supplied Kit makes up 20 Litres mixed volume with combined 3 x components). Using drill and spiral mixing paddle, add 2.5 kg PART B MDI component directly into 20 Litre Pail containing the 6.65kg PART A POLYOL grey/ or black component. Mix the two A & B components together in (20 Litre Pail) for a minimum 4 minutes, ensuring a uniform homogeneous mixture is achieved. Put aside for a 10-minute chemical induction period. After this 10-minute induction period, slowly add the Part C Aggregate into the same 20 Litre Pail. Do not add all Part C at once. Stir slowly to achieve a thorough even mixture ready for pouring/ placement. (The 20 litre Pail will accommodate all three components). It is also important to mix supplied kit components in full, rather than mixing partial volumes of reduced mixes. For flow-ability into narrow joints or voids, you can dispense with the Part C Aggregate completely, providing a more viscous pour-able liquid. Consult with Crest Cormix for specific advice if repair exposed to UV light.

(Note: Correct mixing of this Polyurethane Elastomeric is important. Seek clarification specific to your application.)

MATERIAL PLACEMENT

Once mixed, the ASHCON LW should immediately be poured from the Pail / or directly from a pouring funnel into the repair area. ASHCON LW is self-levelling, however if deep voids or large areas to be filled you may utilise a notched trowel or mixing stick to direct/ push material into corners, etc. This will also assist in removal of surface gas/air bubbles. Ultimately the material will find its own level once poured. ASHCON LW once cured leaves a FINE/ or COURSE finish on the surface, depending on type (FINE or COURSE) PART C aggregate chosen for use. The surface finish can be left as is/ or in the case with expansion joint filling you can grind/sand (next day) the top surface to level of surrounding concrete. The aggregate options both contain a filler granule, which rises to the top surface providing either a COURSE or FINE texture. Both surfaces assist with easier final grind in detailed expansion joint applications.

MATERIAL TESTING

Consult CREST CORMIX directly for any additional specific product testing requirement.

STORAGE & SHELF LIFE

Do not allow to freeze. Store in dry shaded area between 10- 35 Deg C in original un-opened containers. The Shelf Life is 12 months minimum, when stored correctly in original containers.

CLEAN UP

Use CREST GP Thinner or GUNWASH solvents to clean up stirrers, trowels. Do NOT add any reducer/thinner to any ASHCON LW Part or mixed components. Solvent addition to the product will damage the chemical cross linking & result in a product failure. Note: When cleaning stirrers and trowels between mixes, always ensure they are dried with soft rags to avoid cross contamination of solvent in further mixtures.

POT LIFE/ WORKABILITY

ASHCON LW has a pot-life when mixed of approximately 40 minutes at 23-25 Deg C.

HEALTH & SAFETY

Wear Protective clothing, goggles, nitrile gloves and PS2 Dust mask when mixing this 3x component product. If in contact with eyes wash out immediately with water & seek medical attention. Fatal if taken internally. Refer to individual SDS (Safety Data Sheet) available on request from Crest Cormix.

QUALITY ASSURANCE



Proudly Manufactured in Australia by; CREST CORMIX PTY LTD

Fact 1/111 Lewis Road,
Knoxfield, Melbourne
VICTORIA 3180
PH; +61 3 9887 0422 / Mob: +61 406 434 610
Email: enquiries@crestcormix.com.au
Web: www.crestcormix.com.au

DISCLAIMER

Performance data is achieved testing in accordance with International Standards. Testing by others may result in different results from those published as a result of external factors such as poor sampling, incorrect mixing, varying temperatures, varying substrate moisture, curing, crushing procedures etc ..

CREST CORMIX does not take responsibility nor need to defend others testing that does not achieve published data. The user must test the products suitability for the intended application and purpose. CREST CORMIX reserves the right to change the properties of the product. Site conditions and differences in materials are such that no warranty or fitness for a particular purpose, nor liability can be inferred from the published datasheet, written recommendations or from other advice offered.