

165 Allenby Road, Wellington Point, Queensland 4160

Initial Survey

Survey of the above site has shown the eastern path way access to the rear of the property had subsided and settled – 40mm on the eastern most edge.

The subsidence had caused the path to exterior wall joint to open, with a nominal width of 35mm. The lateral path way joints were also not aligned, and the path also had incorrect fall longitudinally (40mm over 7.0 lineal metres).

The path way has been installed on a retained site, with the retaining wall directly adjacent to the easternmost edge of the path way.

Further investigation to the rear of the house has shown that the inground pool apron slab has separated and subsided from the coping by -10mm through to -70mm over the approximate 15 lineal metres of surrounding slab.

All heights were measured using a zip level pro 2000 precision altimeter.

Proposed Solution

Slab Jack Industries proposed raising and re-levelling the problematic areas using Cormix Contite Slab Lift, placed using a Graco Reactor E10HP. The relative cost effectiveness, along with the non-destructive installation techniques, and asset down time of less than 8 hours made this solution the obvious choice.

The criteria for success was measured against the following factors;

- Closing the house to path joint to – 10mm
- Lifting the eastern edge of path way + 35mm to ensure slight fall from house
- Achieving re-alignment of lateral path way joints
- Correcting longitudinal slope on path way
- Raising pool apron back to -10mm of pool coping
- Installing suitable sealants to joints as required

Outcome

All criteria were met or exceeded upon installation and application of Contite Slablift.

110 kg of product used

Client is available for reference, please contact Slab Jack Industries for details

Photographs

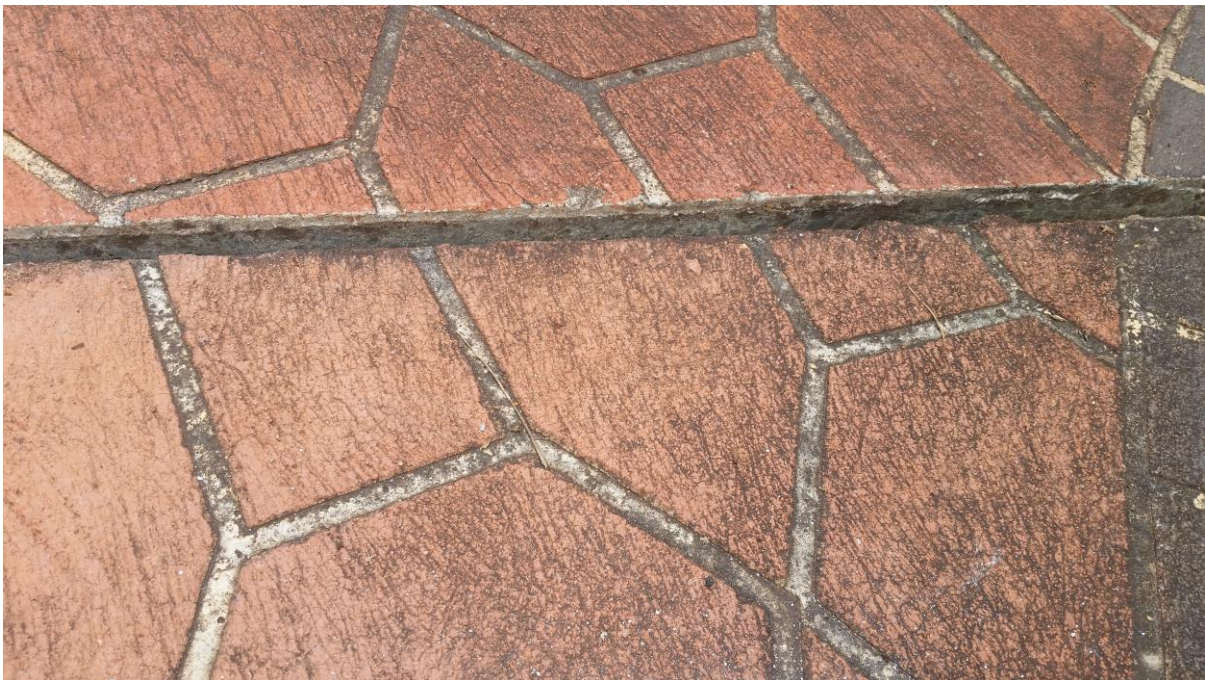
Path way edge to building joint



Path way to edge joint, post works



Lateral Joints



Path way lateral joints and overview



Pool coping to apron joint after -10mm



Pool coping joint after -10mm, was originally -70mm



